



March 2026

Valentijn de Neve, Chief Executive Officer, BlueAlp



TURBULENT ENERGY & CHEMICALS MARKETS!

SUPPLY
DISRUPTIONS

GEOPOLITICAL
RISKS

MARKET
CHAOS

ECONOMIC
SLOWDOWN?

DEMAND
UNCERTAINTY?

OIL & GAS

INDUSTRY

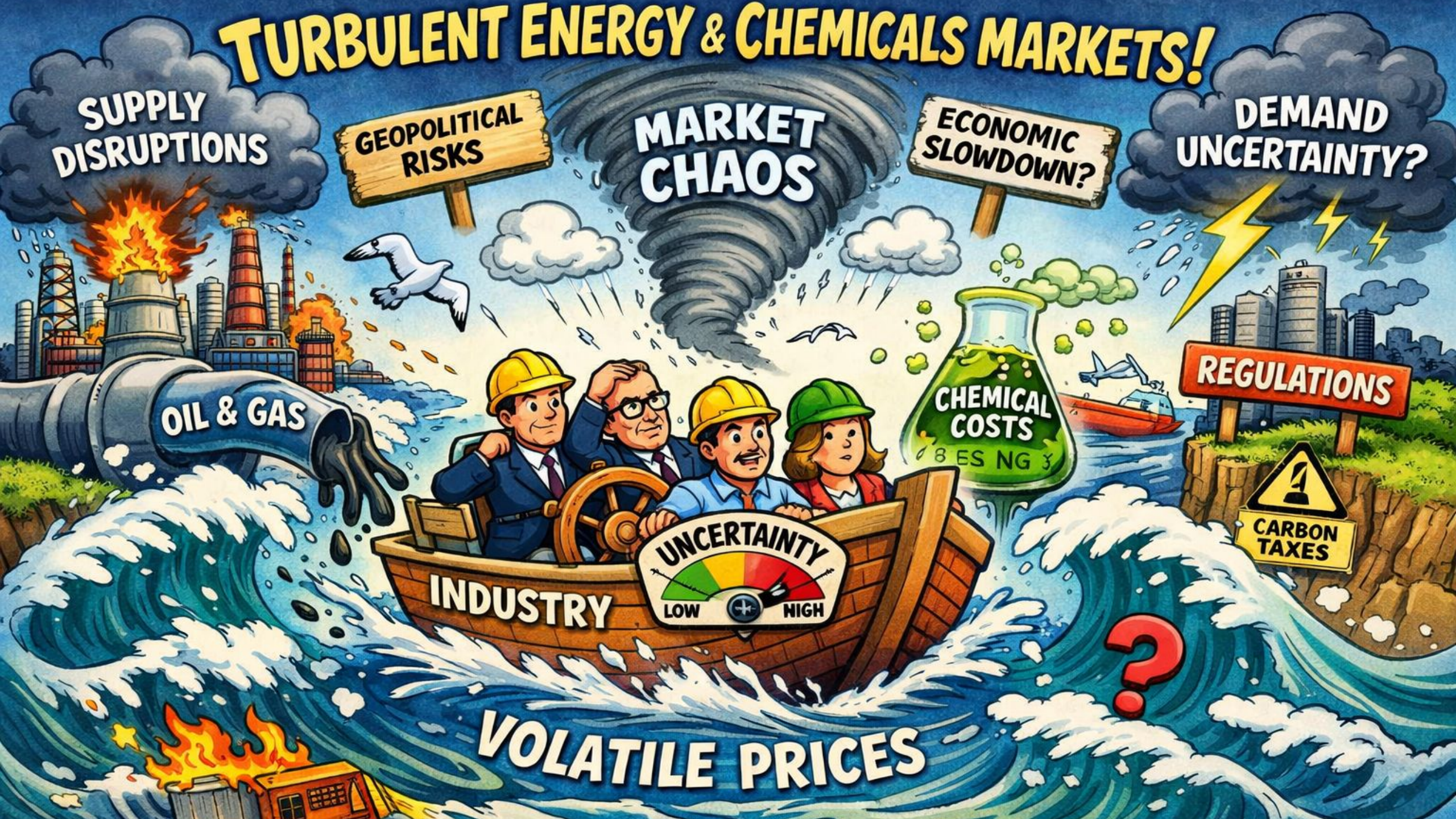
UNCERTAINTY
LOW HIGH

CHEMICAL
COSTS
ES NG

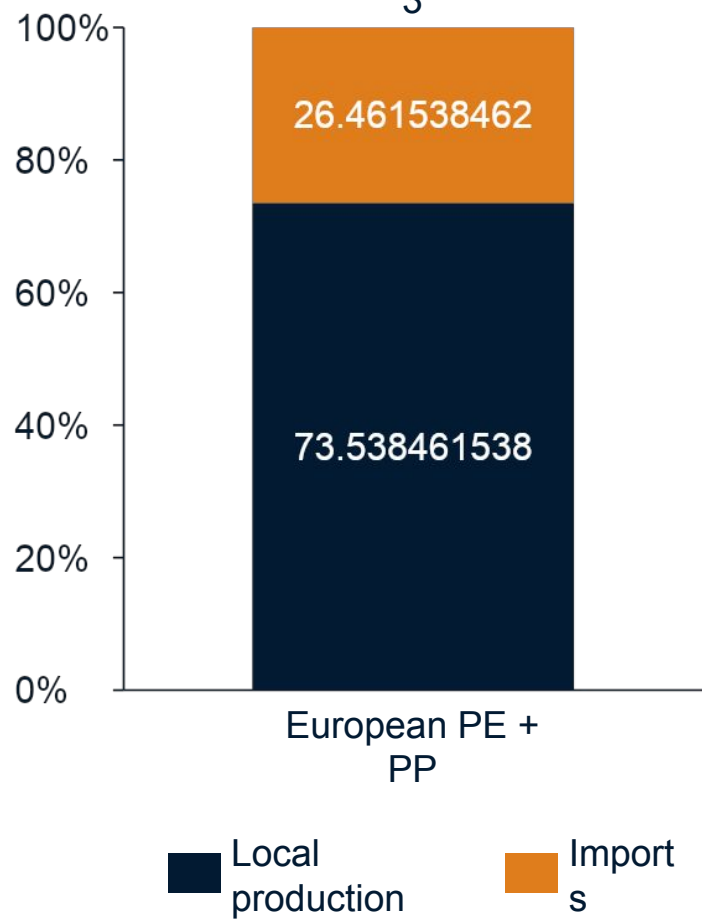
REGULATIONS

CARBON
TAXES

VOLATILE PRICES

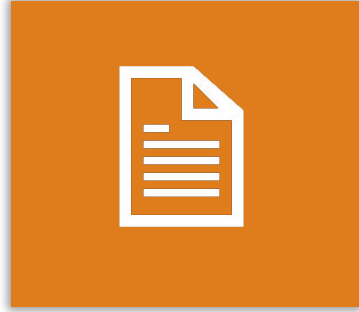


European 2024 supply for polyolefins (mln tons)

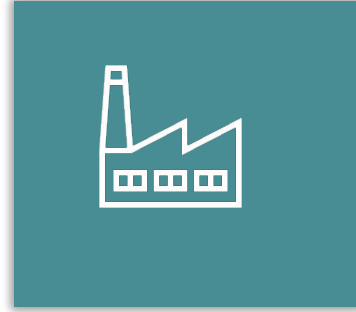


European Plastic Packaging waste (mln tons)





REGULATION



INNOVATION



ECOSYSTEMS



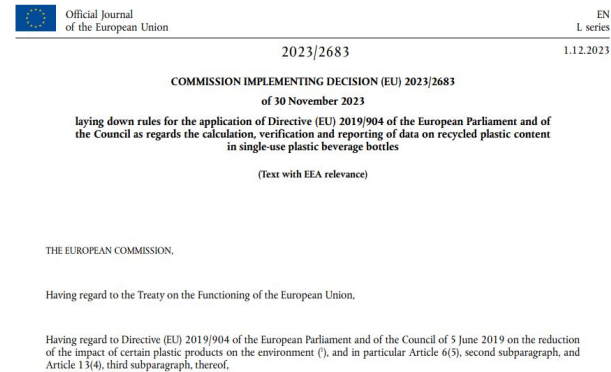
Targets



Calculation



Penalties



Packaging that does not meet the mandatory recycled content thresholds cannot be sold or distributed within the EU.

Member States will establish penalties for breaches.





Circular Plastics

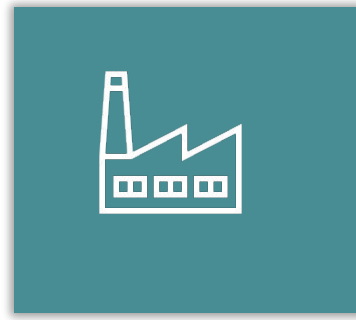


made in
Europe

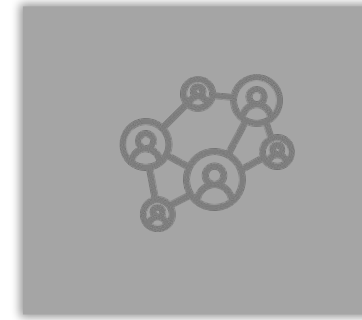




REGULATION



INNOVATION



ECOSYSTEMS




Sihlbrugg |
2014 3kt Input





Renasci



Ostend  2020 Built | 21kt input





**Building the plant
Engineering, Procurement &
Fabrication (EPF)**



Property	Unit	Mixed waste PPO	Typical naphtha steam cracker feedstock
FBP	[°C]	400-650	150 – 250*
Olefins	[wt%]	40-70	<1
Aromatics	[wt%]	<20	< 10
Sulphur	[wt ppm]	<200	< 500
Nitrogen	[wt ppm]	<2,000	< 5
Oxygen	[wt ppm]	<5,000	< 25
Halogens	[wt ppm]	<700	<3
Total metals	[wt ppm]	<200	<1

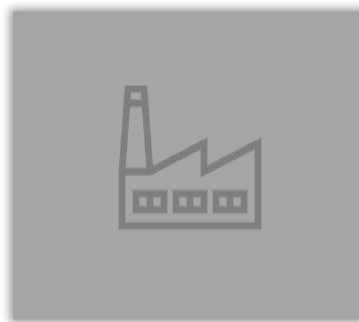
* Steam crackers can be designed for different, also heavier, feed BP ranges.



2025 – Setting the stage for scale



REGULATIONS



INNOVATION



ECOSYSTEMS



ACCELERATING PLASTIC RECYCLING



2014 – Pilot phase (3kt)



2020 – Commercial launch (21kt)



2026 – Industrial scale implementation (21kt)



2027 – Building line 5; undisclosed licensee in Europe



2027/2028 – Building plant in Netherlands (42kt)





BREAKING NEWS

December 2025

Borealis partners with BlueAlp to advance chemical recycling



Borealis has entered a strategic partnership with BlueAlp, a chemical recycling technology leader based in Eindhoven, the Netherlands. Under the agreement, Borealis will transfer its majority stake in Renasci to BlueAlp, and acquire a direct 10% stake in BlueAlp to support its future growth and scale-up.

www.bluealp.nl



Plastic Energy
23,107 followers
4d • 🌐

📌 Plastic Energy and **TotalEnergies** have started operations at our joint venture advanced recycling plant, TotalEnergies Plastic Energy Advanced Recycling (TEPEAR) in Grandpuits, France. ...more



PRODUCTION BEGINS IN FRANCE

An important milestone in deploying circular solutions for plastic waste in Grandpuits, France.



Neste commissions the world's largest upgrading facility for liquefied waste plastic and scales up chemical recycling

chemical recycling | Porvoo refinery | liquefied waste plastic

Neste Corporation, Press Release, 16 March 2026 at 9 a.m. (EET)

Updated 20 March 2026 at 4:00 p.m. (EET)**



Photo: Neste's new facility to upgrade liquefied waste plastic into high-quality petrochemical feedstock is located at the company's existing refinery in Porvoo, Finland. Source: Neste

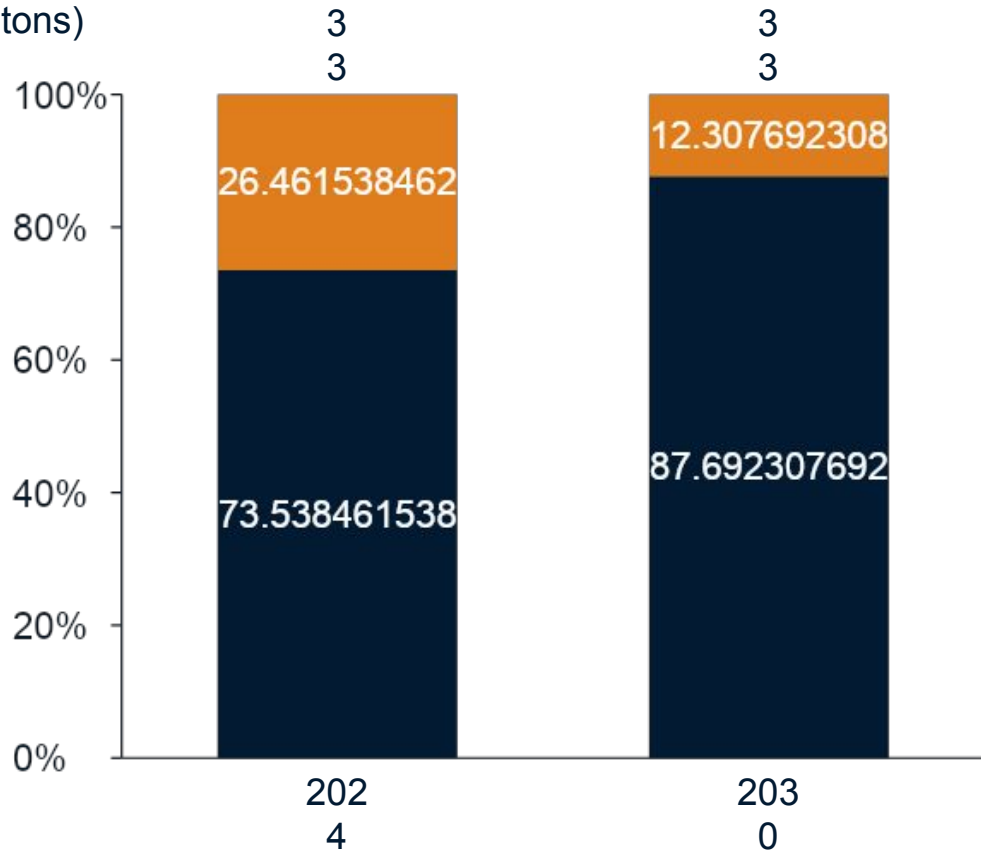
Neste has successfully commissioned its new upgrading facility for liquefied waste plastic (LWP) at its Porvoo refinery in Finland. This EUR 111 million investment marks a major milestone in the scale-up of chemical recycling, enabling the production of high-quality feedstock for the plastics and chemicals industry. With an annual capacity to process up to 150,000 tons of liquefied waste plastic, the facility is the world's largest LWP upgrading facility, and processing will be gradually ramped up.

"The successful commissioning proves that we can process liquefied waste plastic at an industrial scale. This achievement demonstrates Neste's capability to develop advanced technology, set safety standards, and create new supply chains for challenging new raw materials. We are proud of this achievement, and I want to express my sincere thanks to our partners and employees whose dedication has allowed us to turn this vision into a reality," says Jori Sahisten, Executive Vice President of Oil Products at Neste.

Neste has processed liquefied waste plastic (e.g. pyrolysis oil) since 2020. The construction of the new upgrading facility and its integration to the existing oil refinery began in 2023 and was completed at the end of 2025. Production ramp-up was commenced in 2026 and will advance gradually depending on market and legislation development.



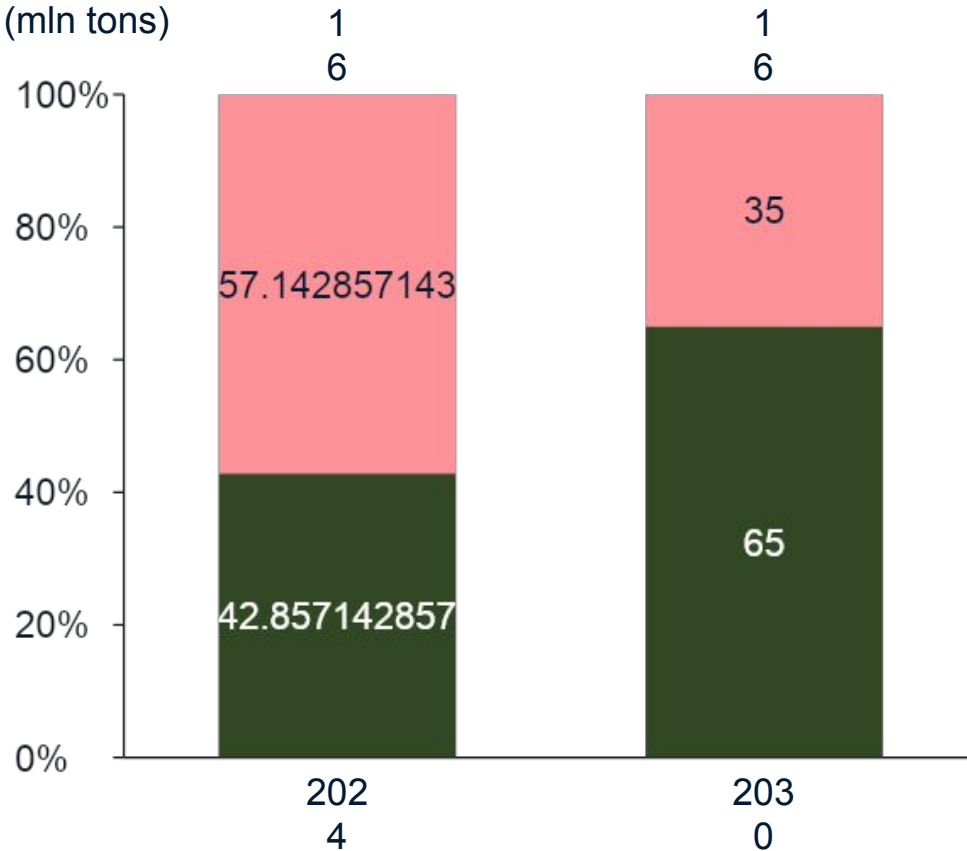
European 2024 supply for polyolefins (mln tons)



Local production

Imports

European 2023 Plastic Packaging waste (mln tons)



Recycled

Non-recycled





Accelerating plastic recycling

March 2026

Valentijn de Neve, Chief Executive Officer, BlueAlp

Valentijn.de.neve@bluealp.nl

