



**COMPOSTABLE  
BY DESIGN**  

---

**PLATFORM**

Go Circular, March 26, 2026  
Mannheim



# COMPOSTABLE BY DESIGN PLATFORM

## WHO WE ARE

A cross-value chain initiative promoting collaboration and innovation in compostable packaging and products, and associated bio-waste treatment technologies and processes

## FOUNDING BELIEF

Using suitable compostable applications contributes to a circular economy by improving bio-waste recycling



boosting collection rates



minimising plastic contamination





# VALUE-CHAIN REPRESENTATION





# OUR VISION AND OBJECTIVES

## VISION

A future where **appropriate** compostable packaging and products are widely accepted and effectively recycled at scale across bio-waste facilities in Europe supporting sustainable bio-waste management and the circular economy.



Promote Circular Economy



Unlock bio-waste Recycling Routes



Foster Collaboration and Innovation



Build Awareness and Educate



# ELEMENTS TO CATALYSE CHANGE





# OUR KEY DELIVERABLES

**Principles for EPR** for compostable packaging and products



**Design recommendations** for compostable packaging and products



**Insights into the bio-waste recycling infrastructure** in Europe



**A framework and best practice guide** for field-testing the disintegration of compostable packaging and products in industrial composting facilities





# DESIGN GUIDELINES



Scope: V1.0 guideline targets products designed for recycling at industrial composting (IC) facilities or through anaerobic digestion, followed by IC

European legislative and infrastructure landscape to date

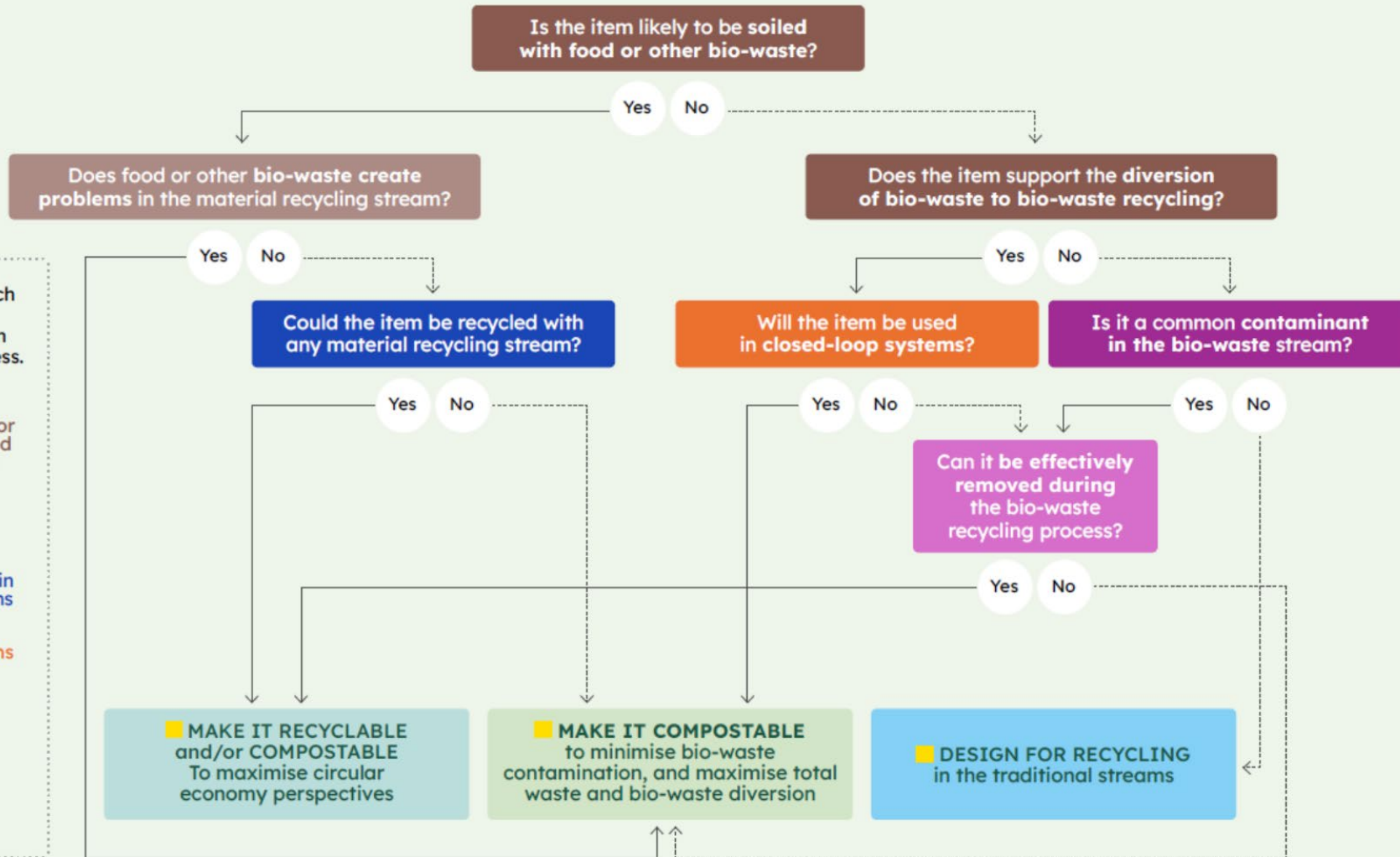
When to use compostables and a decision-tree

Technical and material advice

Certification and examples of best practices



# INTERACTIVE DECISION TREE



**COLOUR KEY/** Each colour represents a key consideration in the design process.

- Criterion 1. Contact with food or other bio-waste and consequent soiling
- Criterion 2. Bio-waste contamination risk
- Criterion 3. Problematic items in other waste streams
- Criterion 4. Closed-loop systems
- Relevant considerations

Yes ———

No - - - - -



minimising plastic contamination in bio-waste



boosting bio-waste collection rates



Promote big picture Circular Economy



# FRAMEWORK AND BEST PRACTICE GUIDE FOR FIELD-TESTING DISINTEGRATION

Pilot version V1.0 with external peer reviewers

## COMPOSTABLE BY DESIGN PLATFORM

A FRAMEWORK AND BEST PRACTICE GUIDE FOR FIELD-TESTING THE DISINTEGRATION OF COMPOSTABLE PRODUCTS AND PACKAGING IN INDUSTRIAL COMPOSTING FACILITIES

Standards and product certification

Industrial composting processes

Compost quality

Field-testing guidance

Existing field-testing protocols



## Framework and Best Practice Guide

Our Framework and Best Practice Guide provides a framework for harmonising field-testing disintegration methods applicable across the diverse range of industrial composting operations in Europe, in order to support consistent interpretation of results.

It was developed through collaborative working of cross-value chain stakeholders within the Compostable by Design Platform (CbDP), led by composting associations, biodegradation testing organisations and other composting industry experts.

The CbDP industry experts have drawn on existing field testing protocols and their decades of experience to identify the most effective methodologies for testing disintegration of compostable packaging and products within real-world environments.

The full guidelines to be available soon.

[Download the summary](#)



## Acknowledgement:



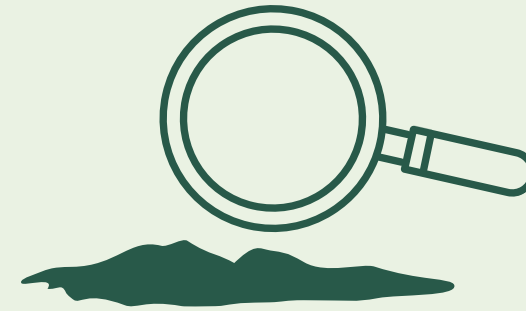


# TESTING FOR COMPOSTABILITY

European standards EN 13432 and EN 14995 specify several tests that packaging or products must meet to be claimed suitable for industrial composting.



Biodegradation, heavy metal concentrations and ecotoxicity can only be tested in a laboratory.



Field-testing is a direct way of assessing **disintegration** of compostable products and packaging in an operational industrial composting facility

Conducting field-testing trials within different facilities using different industrial composting methods can demonstrate disintegration across the varying operational conditions found in practice and enhance confidence across the bio-recycling and composting sector.

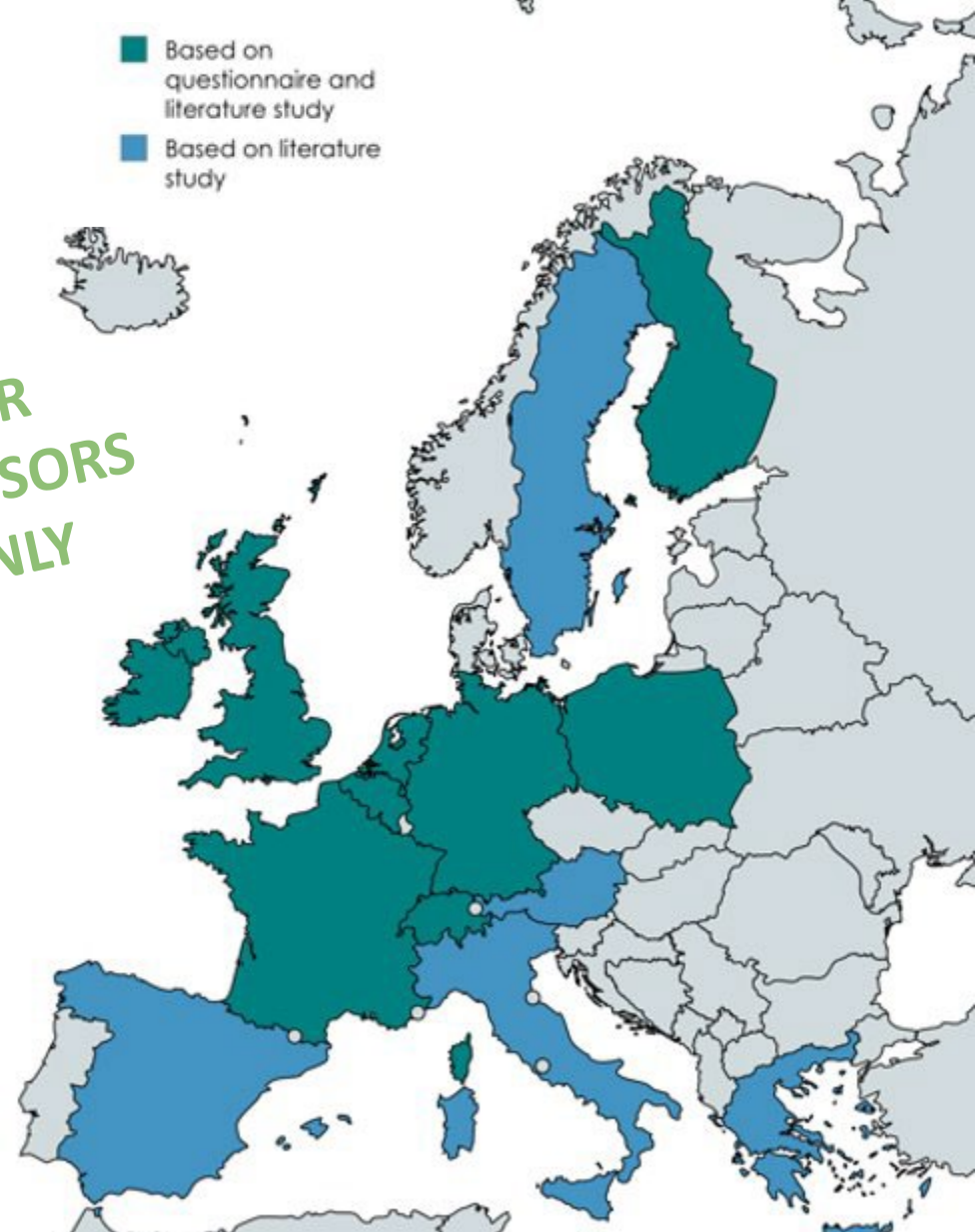


## 14 COUNTRY REPORTS

- Legislation related to bio-waste **management**
- Bio-waste **collection**
  - Collection system for bio-waste (food waste/garden waste)
  - Bio-waste share in residual waste
  - Capture rate bio-waste
  - Capture rate food waste
  - Use of compostable bio-waste collection bags
- Bio-waste **treatment**
  - Dominant treatment technique for food waste
  - Dominant treatment technique for garden waste
- Compostable items
  - Mandatory ⇔ allowed ⇔ forbidden
  - Impact PPWR per country

FOR SPONSORS ONLY

- Based on questionnaire and literature study
- Based on literature study



Literature study: Based on data of Zero Waste Europe, ECN, Early warning reports (European Environmental Agency), etc.



# FOOD WASTE TREATMENT

## Dominant food waste treatment technique

- AD (stand alone)
- AD followed by post-composting
- Industrial composting
- AD (stand alone or followed by post-composting)
- AD (stand alone) or composting

**Finland:** 57% of municipal bio-waste treated by means of AD (with or without post-composting)

**Ireland:** AD (stand alone) or industrial composting

**Greece:** very limited collection of food waste

**Catalonia:** AD followed by post-composting is dominant technique for the future



# COMPOSTABLE PACKAGING EPR FEES SUPPORT CIRCULARITY



Supports higher capture rates of food waste



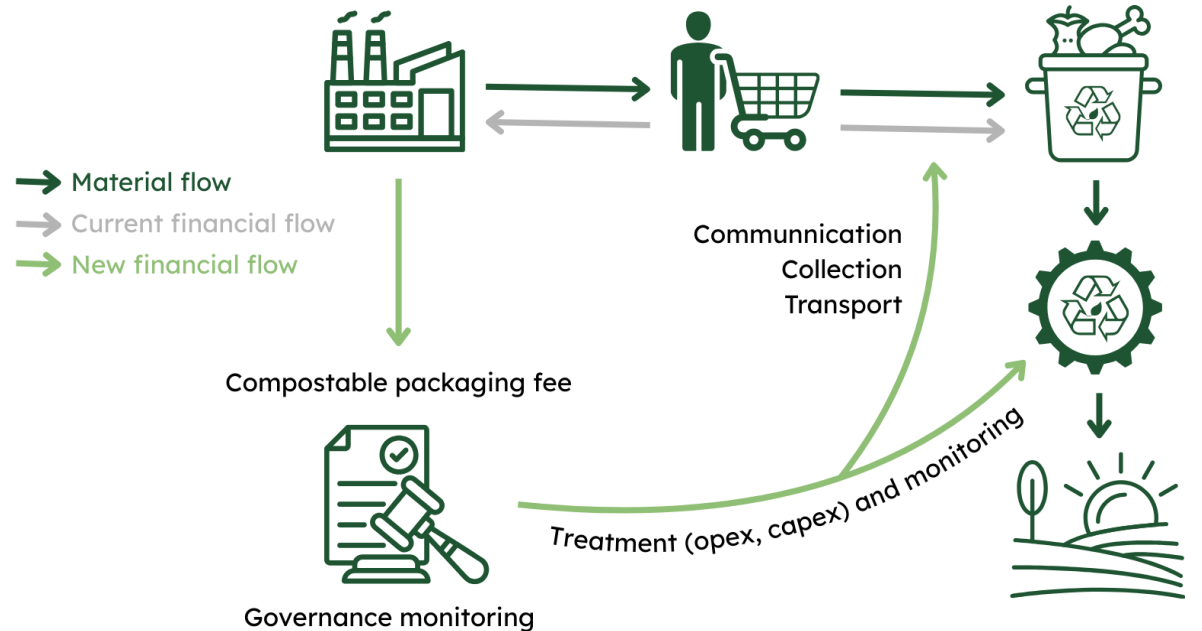
Promotes correct use and disposal of compostable packaging



Contributes to waste reduction and recycling targets



Distributes financial responsibility more equitably across the value chain





# RECOMMENDATIONS TO HELP STAKEHOLDERS BEGIN A EPR POLICY DEVELOPMENT JOURNEY

A shared involvement creates shared responsibility

- Convene all relevant stakeholders
- Prioritize composters and municipalities whose participation is essential to change how biowaste is collected and processed
- Evaluate the current conditions to ensure the EPR system is designed and operated to suit local needs

Smart financing that shapes behaviour and transforms

- Producers should cover the full net cost of managing compostable packaging at end-of-life (Capital ex, monitoring and assessment, consumer communication)
- Associated costs should be proportionally financed through EPR fees
- Use of financial incentives to encourage behaviours that can boost overall system performance

Use what works, keep what fulfils the purpose

- Obtain independent certification for compostability
- Comply with industrial compost standard EN13432
- Ensure packaging supports bio-waste collection
- Align packaging with CbDP Design Guidelines



COMPOSTABLE  
BY DESIGN  
PLATFORM



## CONTACT US

---

If you are interested in joining the CbDP or would like further information, please contact us.

**CbDP Secretariat**

[info@compostablebydesign.com](mailto:info@compostablebydesign.com)



<https://compostablebydesign.com/>



<https://www.linkedin.com/company/compostable-by-design-platform>



Recognising that effective solutions require collective effort, the Platform brings leaders together from all segments of the compostable materials value chain.